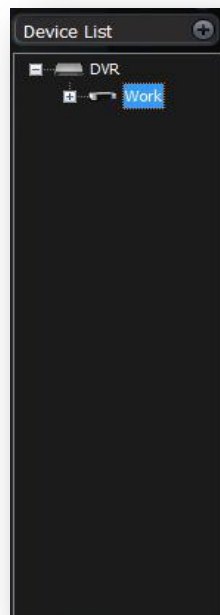


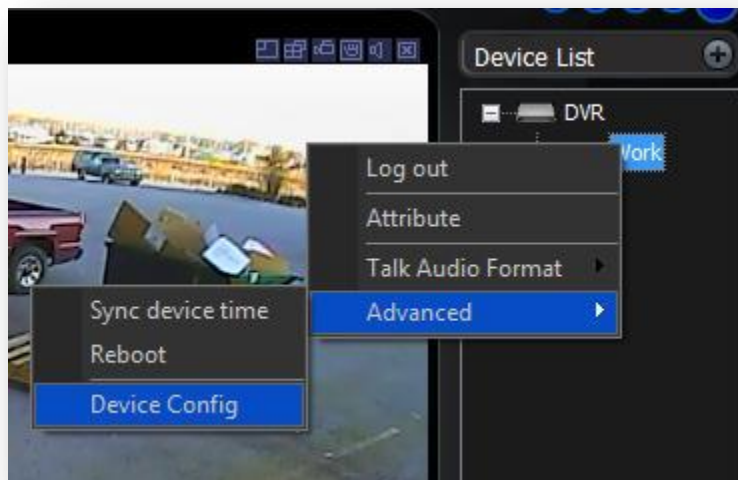
Managing DVR Settings From PSS

Introduction: This guide will explain how to manage the settings on your DVR through the PSS software. This can be very useful while you are at a different location than your DVR and need to change settings on it.

Step 1. First we need to open up the PSS software on your PC or Mac. After you have logged in and are at the main screen, take a look at the Device List area on the top right of the screen. Now click the plus arrow to bring up a list of devices connected to your system. You should see "DVR" with a plus sign next to it. Click that to bring up a list of your named devices. In our example ours is named "Work".



Step 2. Now, right click on your device title (i.e. Work), this will pull up a menu giving you a few options to select from. For now, scroll over to the bottom option labeled "Advanced", this will bring up another submenu. From this submenu select the option that's labeled "Device Config".



Step 3. After selecting Device Config a new window will pop up giving you access to all the options on your DVR. These are located on the left side of the window under "System Config".

