

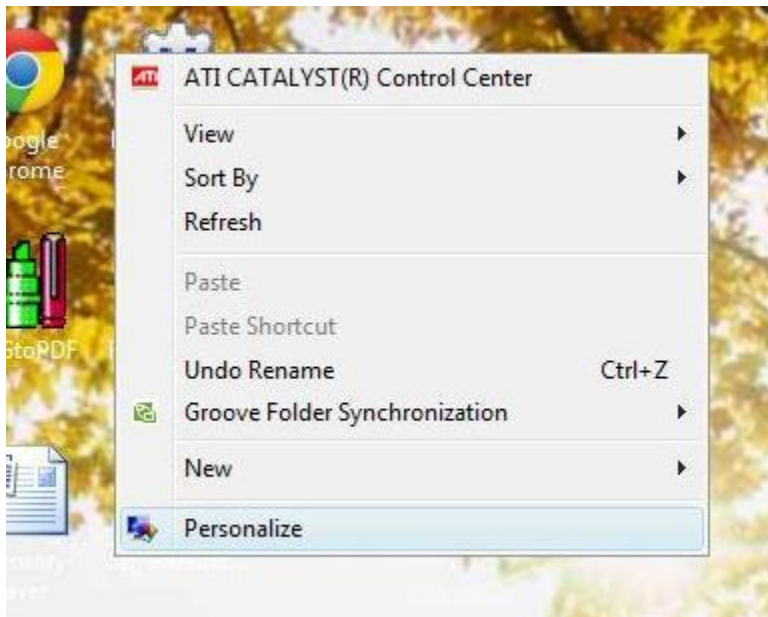
Solving Display Issues In PSS with Vista or Windows 7

Preface:

You may find that after you install PSS, that some icons are overlapping or simply not showing up correctly on the screen. This has to do with a resolution mismatch and can easily be solved by following these instructions

Step 1: Go back to you main desktop:

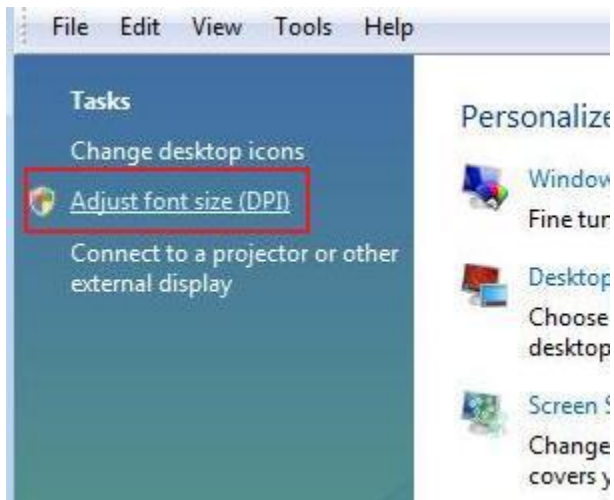
Make sure that you can see your main windows desktop screen with all of your program icons. On any empty space on that screen, Right Click and choose “personalize”



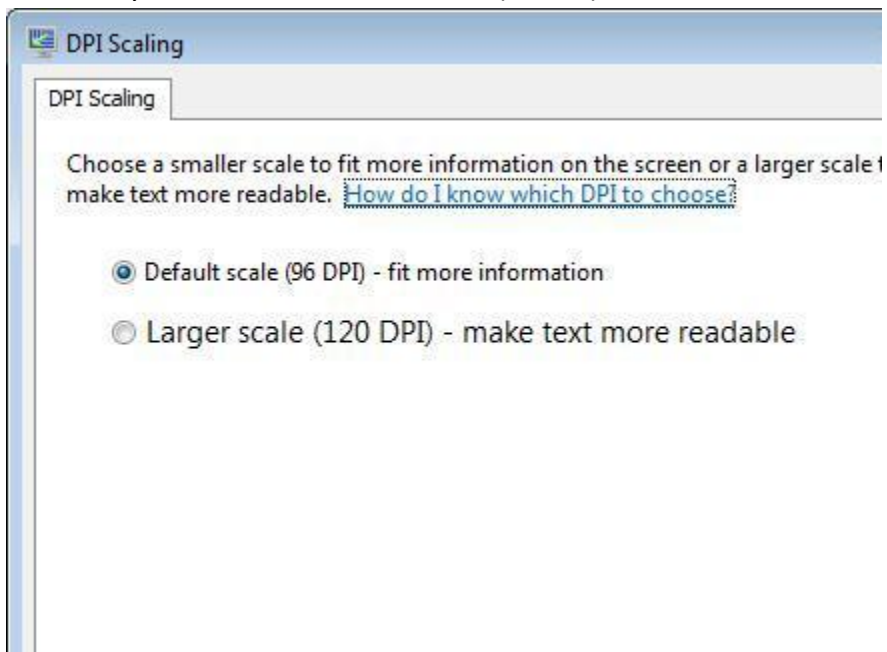
Step 2: Adjust the DPI settings:

In Vista:

you will select “Adjust Font Size (DPI)”



And then you will select Default Scale (96 DPI)



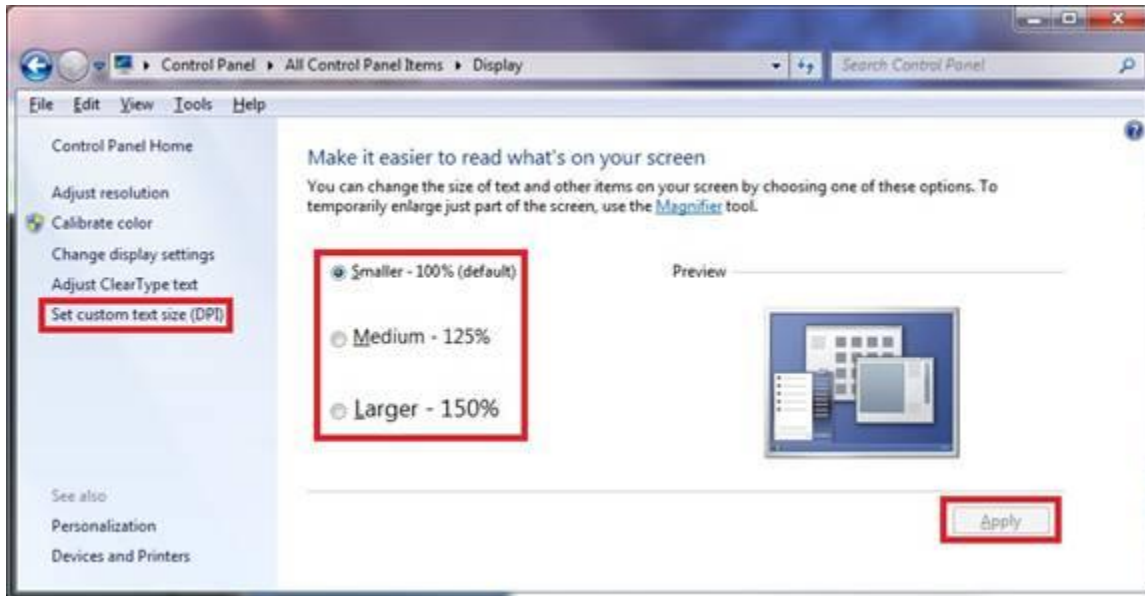
You may need to restart your computer for the changes to take effect.

In Windows 7:

Click on the Display icon at the bottom left hand part of the screen:



Select "Set Custom Text Size">Select "smaller – 100% (Default)"> Select "Apply"



You may need to restart your computer for the changes to take effect.