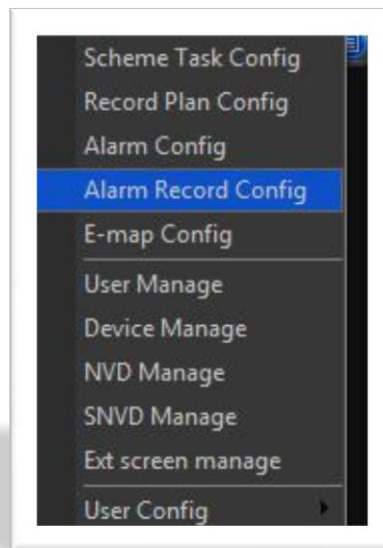


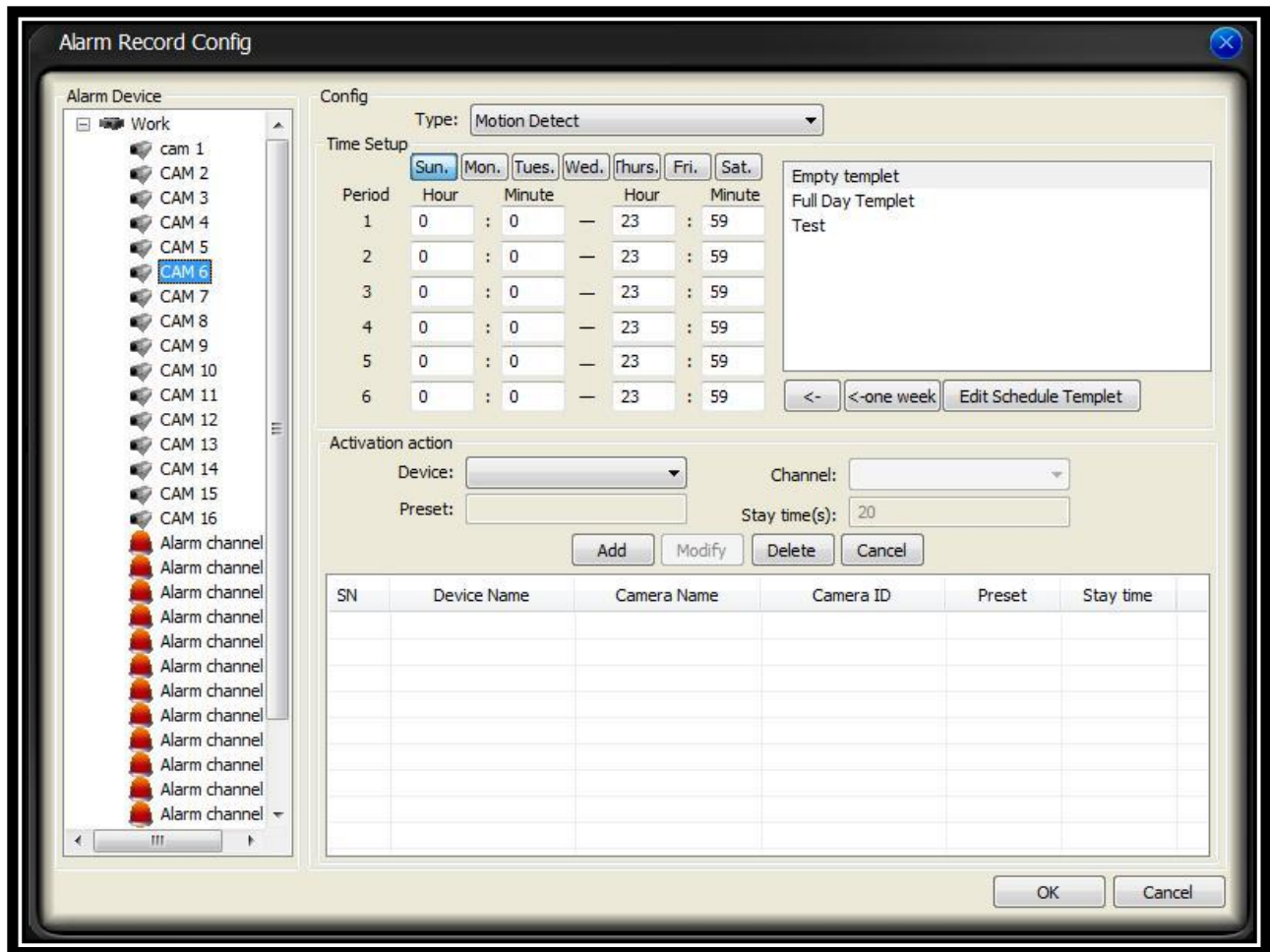
Motion Detection Alarm Recording in PSS

Introduction: Using PSS you can setup an Alarm when motion is detected, once that Alarm is activated PSS will begin recording directly to your computer. This is a useful feature in many different scenarios, if you have not read our PSS Motion Alarm guide now would be a good time to do so as it takes you through each step to setup a Motion Detection Alarm.

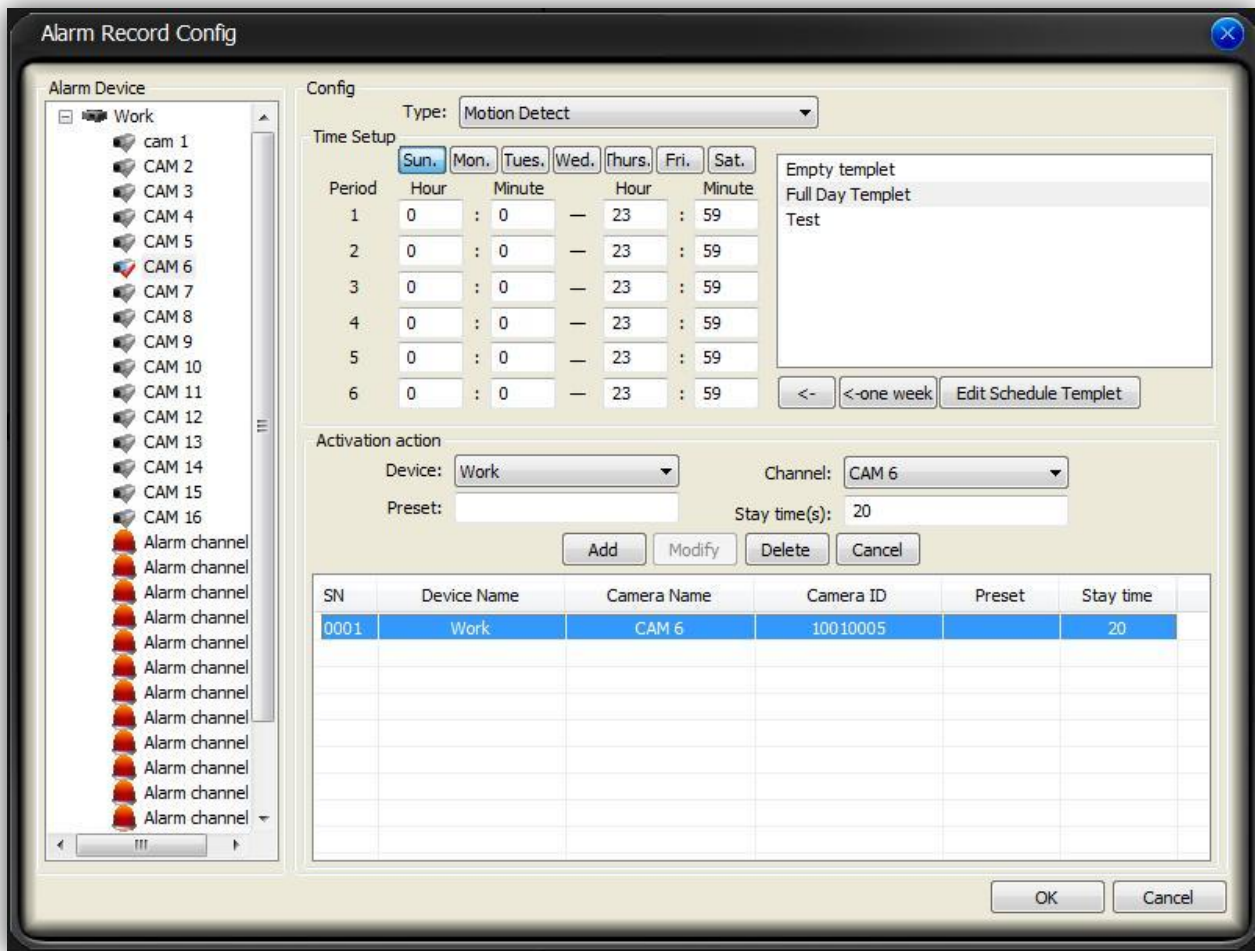
Step 1: Begin by first opening your PSS software by double clicking on its icon. Insert your **username and password** then click **Login**. You should now be viewing the main PSS screen. From here click the option **Setting Manage** on the right side of the screen, then select the option labeled **Alarm Record Config**.



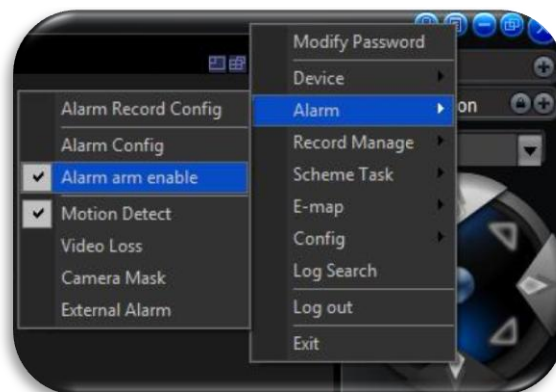
Step 2: Now that we are viewing the Alarm Record Config window you will notice your **device name** in the left column. Click the **[+] arrow** next to the device to expand the list with your camera names. Next we need to select which camera we would like to setup for Motion Detection Alarm Recording. For our example we will begin with **CAM 6**, go ahead and click your cam name now to **highlight it**.

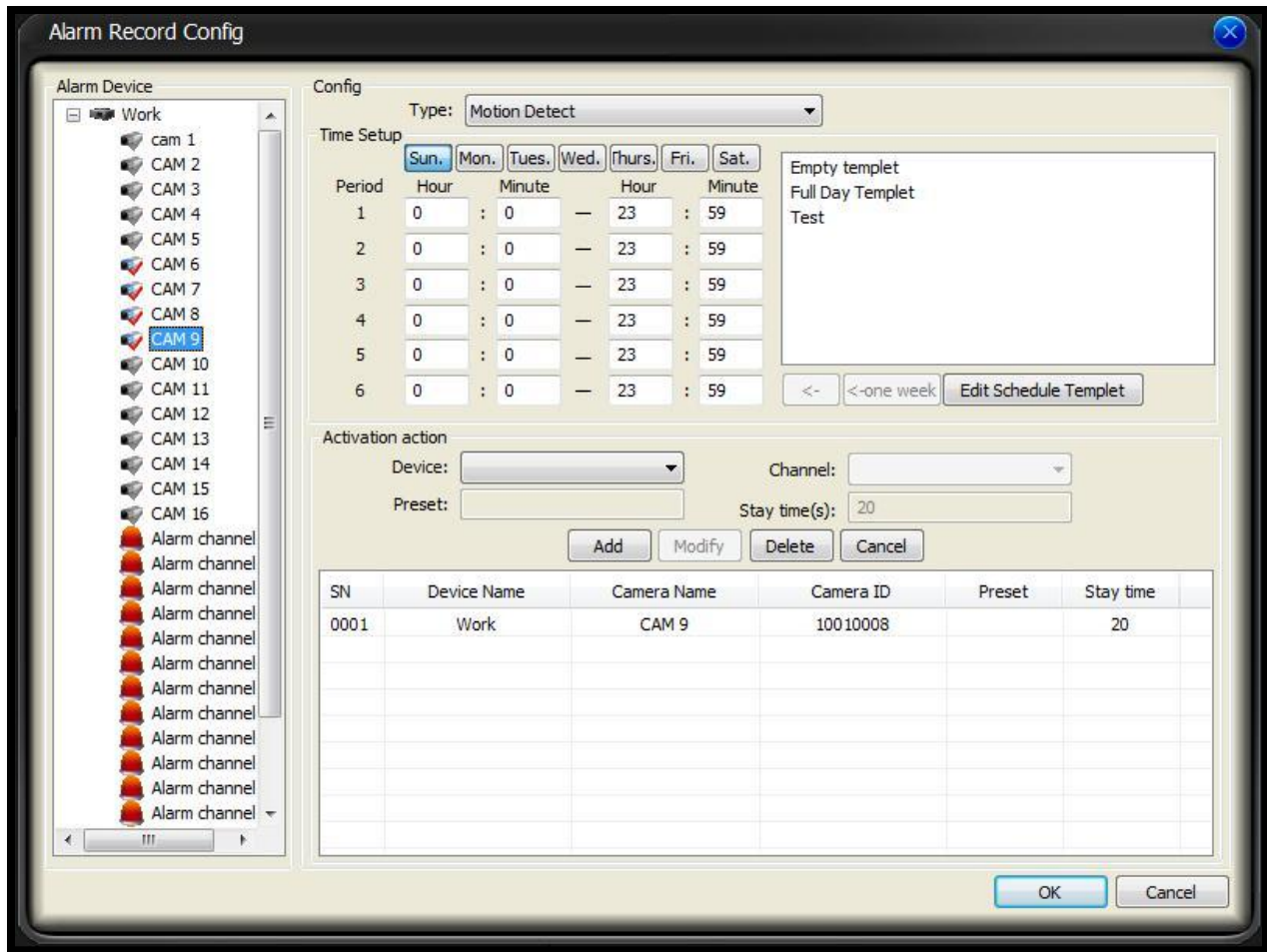


Step 3: Once we have our first camera selected you will notice the days of the week along with timeframe editable fields directly under it. Here you can set a **template** for recording or manually go through and set the times for PSS to activate Motion Detection Alarm Recording. For our example we would like PSS to record when motion is detected every minute of every day of the week, therefore we will click the option to the right labeled **Full Day Template** then click the button under that area that is labeled "**<-one week**". Next, focus on the bottom area labeled **Activation Action**. First select your device from the **Device** dropdown menu. Next, we have selected Cam 6 as our first camera to record so we will need to select **Cam 6** from the dropdown menu in the area labeled **Channel**. Once you have your camera selected be sure and set your **Stay Time** in seconds (how long the video stays up on your PSS window). Once your options are set click the **Add** button to add the activation action for this camera.



Step 4: We now have one camera setup for Motion Detection Alarm Recording, if additional cameras need to be setup repeat **Step 3** for each camera. As you can see in our example below we have Cam 6, 7, 8, and 9 selected for recording. Once you have each one of your cameras setup we will need to activate our Motion Detection Alarm, to do so click the **Full menu button at the top, select Alarm, then make sure Alarm Arm Enable is checked along with Motion Detection.** Once you have these activated PSS will begin recording once motion is detected on each camera.





Step 5: Now that we have our cameras setup and the **Alarm Arm Enabled** we can check our folder for recordings whenever motion was detected. Once you have created motion to test the configuration browse to the default download folder for PSS recordings: **C:\PSS Downloads**. Inside this folder should be one or two more folders, one labeled with the date of the video capture, inside that should be your recordings.

