

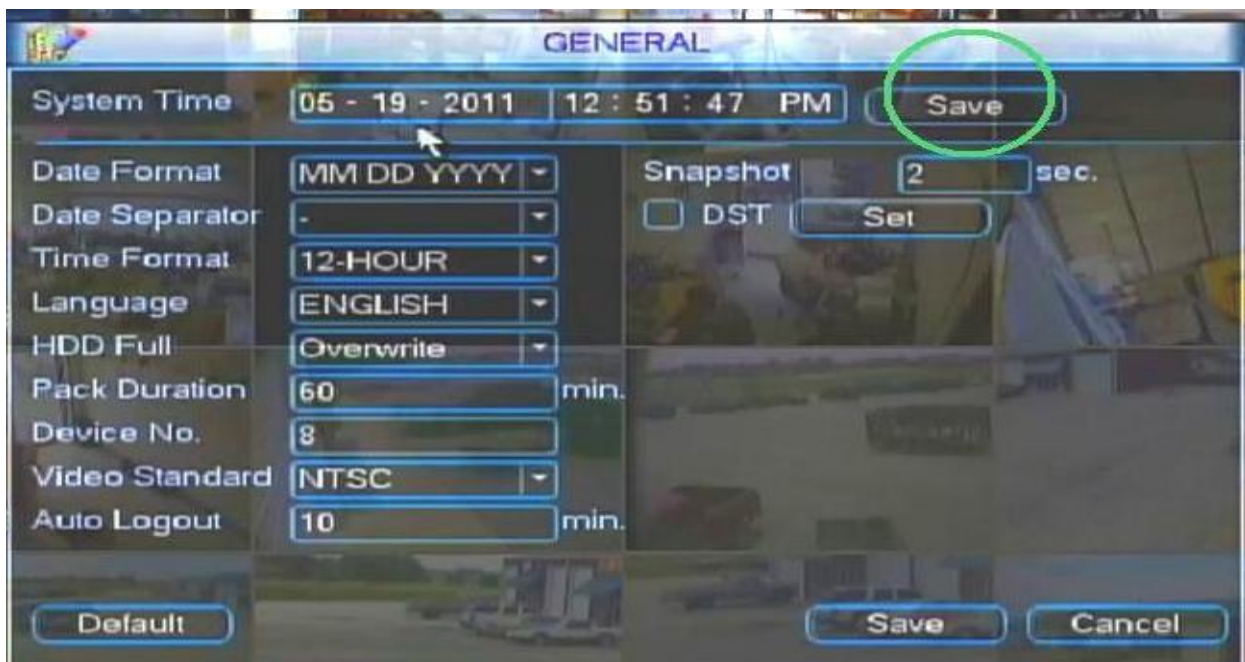
How to Set the Correct Date and Time

Preface:

This tutorial will enable you to set the correct date and time on your DVR.

Step 1:

Open to your Main Menu on your DVR then select the Setting Option. Once there then click on the General Option, then a screen will appear with the time and date settings, select the time and date to the time-zone you are currently in. Then to the right of that, select the Save option.



Date Format:

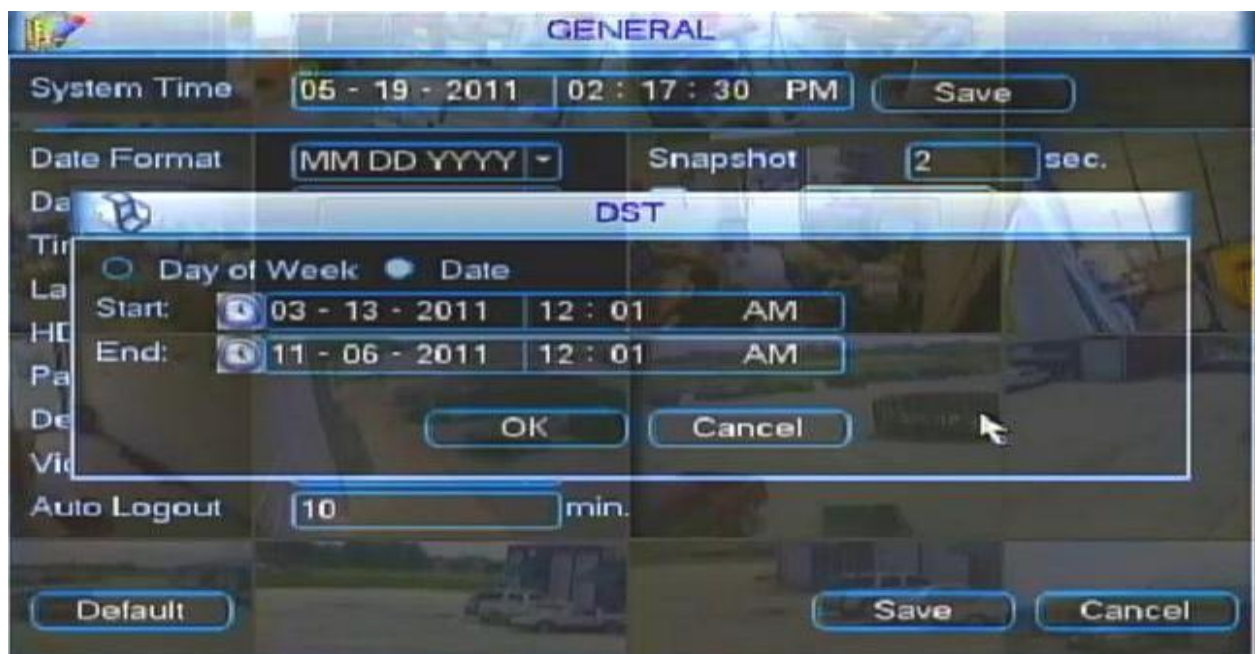
Now scroll down to the Date Format and change it to your preference: YYYY MM DD=year month day, or MM DD YYYY=month day year, or DD MM YYYY=day month year.

Time Format:

There are two settings; one is 12-HOUR and 24-HOUR, the difference is 12-HOUR is regular time and 24-Hour is Military Time

DST

To set the Daylight Saving Time setting you need to click on the box right next to **DST**, then select the Set option. There are 2 options that you can choose from: # 1 exact date option and #2 the day of week option. To choose the Date option, highlight the "Date" circle, and at the Start box, input the time and date for **Spring Forward**(which for 2011 is Sunday, March 13,2011 12:01 AM), and then in the End Box, input the **Fall back** time(which is Sunday, November 6,2011 12:01 AM). Example:



To use the **Day of week** option go to the Start box and select the 2nd Sunday in March, 12:01 AM. Then in the End box, select the 1st Sunday in November, 12:01 AM. Click save when you are all done.

